

FRANK PATTERN™ SHOWER DRAINS


SPECIFICATION

Recommended for use on concrete floors to facilitate drainage. Drain unit consists of cast iron main body, top & base ring, stainless steel grate, and stainless steel fasteners.

DESIGN FEATURES

- Cast iron main body assembly with corrosion resistant coating
- Instant Set® drain pipe attachment. No additional hardware required
- Top with integral membrane clamp ring
- Removable stainless steel grate for drain cleaning and replacement

COMPLIANCES/LISTINGS

- IAPMO 2786; ASME A112.18.2-2015/CSA B125.2-15/UPC/IPC
- Uniform Plumbing Code (UPC®) 

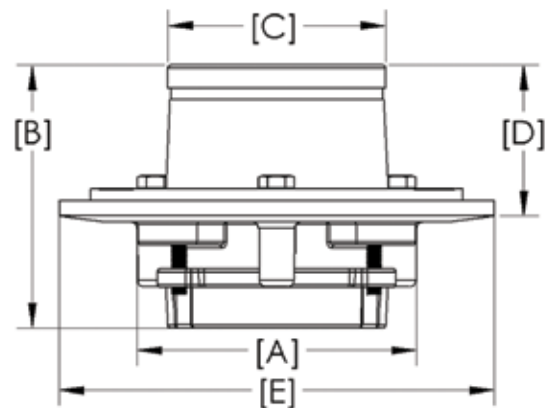
INSTALLATION

1. Position drain assembly in place with drain pipe connected prior to pouring concrete.
2. Instant Set® joint clamps on outside of drain pipe. Remove top flange and simply slide over pipe. Evenly tighten 3 internal bolts with rubber washer seals, tighten to 20 in-lbs. Re-install top flange and secure bolts.
3. Pour concrete flooring to level of grate.



20SD

Side View



PART NUMBER	OUTLET SIZE	OUTLET TYPE	STRAINER DIAMETER	MSTR CTN QTY
20SD	2"	Instant Set	3-1/2"	4

PART NUMBER	DIMENSIONS (inches)				
	A	B	C	D	E
20SD	4 1/2	4 1/4	3 1/2	2 7/16	7

Product Submittal	
Job Name:	Date:
Part Number:	Quantity:
Architect:	
Contractor:	

Content matter is subject to change at any time. It is the user's responsibility to ensure the most updated revisions are obtained. 4/2021